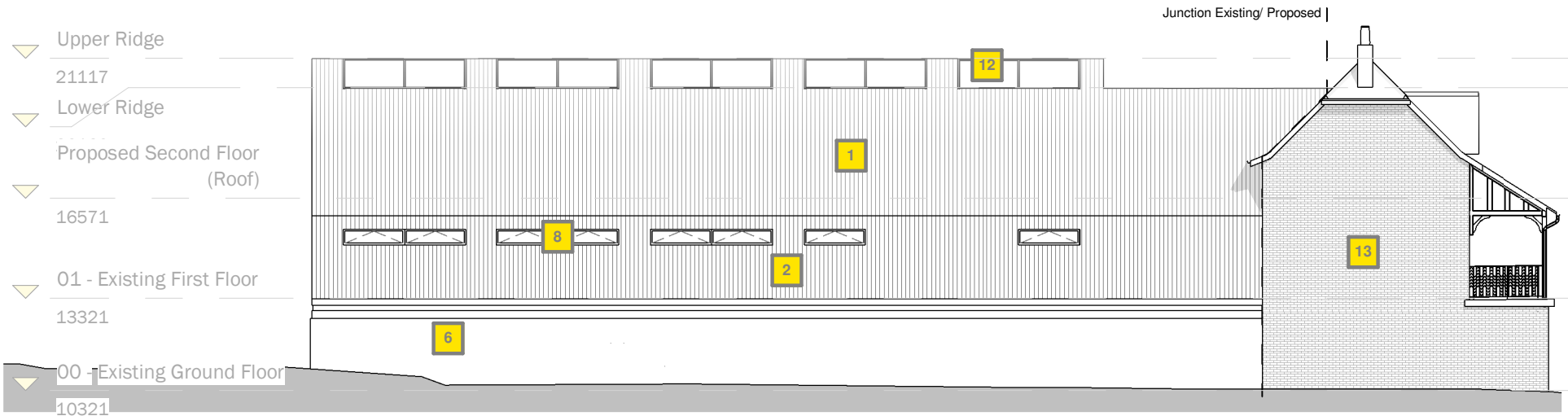
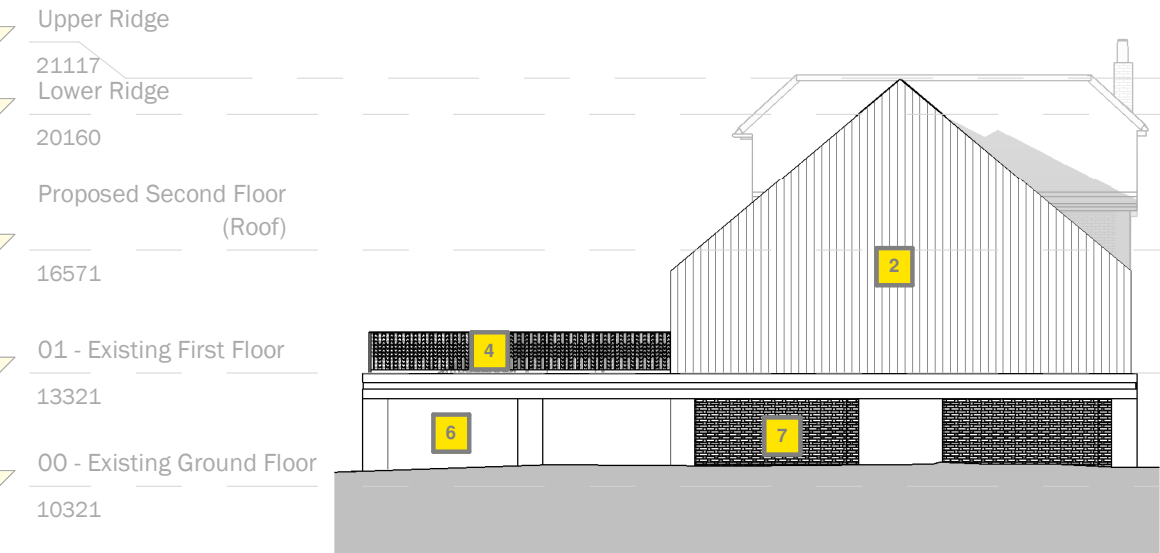


1\* Proposed Elevation - South East  
1 : 200



2\* Proposed Elevation - North West  
1 : 200



3\* Proposed Elevation - North East  
1 : 200



4\* Proposed Elevation - South West  
1 : 200

Materials Key

- 1 Blackened charred timber rainscreen cladding to roof with expressed 10mm gaps between members. Increased spacing above plant-room for passive ventilation.
- 2 Blackened charred timber rainscreen cladding to upper walls with expressed 10mm gaps between members.
- 3 Black Steel Framed Glazed Double Door Entrance
- 4 Black PPC aluminium 'vertical rail and chevron' balustrading to external terraces.
- 5 Black Metal External 'garage' doors. Roller shutter to match proposed boat club
- \* 6 Exposed structural concrete framework with expressed slotted channel to horizontal framing.
- 7 Feature lattice brickwork panels formed between concrete structural framework.
- 8 Black PPC aluminium double glazed window units.
- 9 External exposed concrete terracing
- 10 External exposed concrete steps
- 11 External exposed concrete 'podium' steps
- 12 Black PPC aluminium double glazed rooflight units along ridge line.
- 13 EXISTING RETAINED ELEMENTS

A - Layout Amended and Roof Space Utilised as Ancillary Use - 24-02-23 - DC - CB

rev	description	date	drawn	check
Revision Schedule				
client:				
Quintin Hogg Memorial Fund + Quintin Hogg Trust				
project:				
Existing Boat House, Chiswick				
title: Proposed Elevations				
scale:	@A3	date:	24/08/18	
1 : 200				
project no:	17013	drawing no:	AST -EBH-ZZ -DR -A -20 - 101	
issued for:	PLANNING			rev: A

Assorted Skills + Talents\*



London: +44 (0)2037010403  
48 Charlotte Street, W1T 2NS  
(w) www.assortedskillstalents.com

Manchester: +44 (0)161 7130517  
3 Cobourg Street, M1 3GY  
(e) hello@assortedskillstalents.com